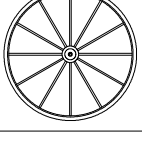
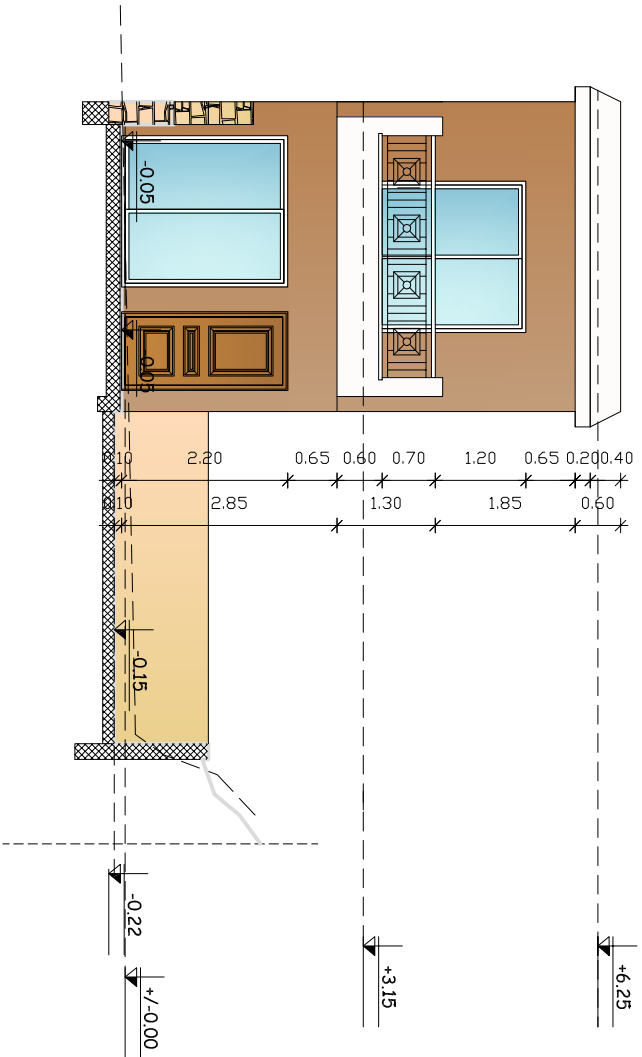


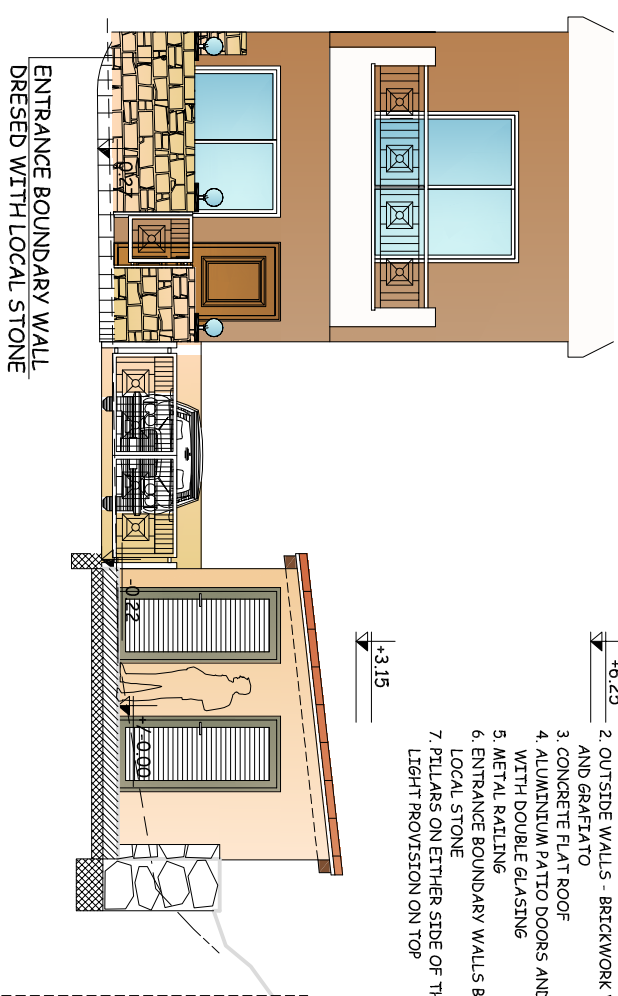
J. ARISTODEMOU IDEAL HOMES



Kato Pervolia Street, CYKING BLOCK I, No.1, P.O.Box 60296, CY 8046, Patos, TEL: (357) 26934198 / 26933808, Fax: (357) 26941396 / 26942214, E-mail: info@jaristodemou.com.cy, Website: www.jaristodemou.com.cy



FRONT ELEVATION



FRONT ELEVATION FROM THE STREET

MAISONNETTES

- NOTES :
1. ENTRANCE WOODEN DOOR
 2. OUTSIDE WALLS - BRICKWORK WITH PLASTER AND GRAFFATO
 3. CONCRETE FLAT ROOF
 4. ALUMINIUM PATIO DOORS AND WINDOWS WITH DOUBLE GLASSING
 5. METAL RAILING
 6. ENTRANCE BOUNDARY WALLS BUILD WITH LOCAL STONE
 7. PILLARS ON EITHER SIDE OF THE GATE WITH LIGHT PROVISION ON TOP

MEMB. S'33H	CONTRACTOR - SUPPLIER	PHOENASAK
PROJECT MANAGER :		

PROJECT NAME :	TIMI PLOT 372
DESIGNED FOR :	J. ARISTODEMOU

TEAM OF ARCHITECTS/ENGINEERS	CHRISTOS TSANGARIS - ARCHITECT DPLG Dagmara Kawalec - ARCHITECT DPLG
------------------------------	--

REV./ISSUE	EXAMIN	SCALE	DATE	PROJECT NO.	DRAWING NO.
		1:100			03
DRAWING TITLE : MAISONNETTE No.6 ELEVATIONS					